

RAID-500U3

RAID Subsystems

5U Ultra 160 SCSI RAID Subsystem

Features

- Host-independent RAID solution
- 64-bit RISC high performance RAID processor
- Ultra 160 SCSI to SCSI interface
- Host OS independent
- RAID levels 0, 1, (0+1), 3, 5, 10, 30, 50
- Eight SCA-2 hot swap disk drive bays (1.6" height)
- Multiple Host, MSCS clustering support
- Web and Text based GUI management software
- Management via In-band SCSI, LAN SNMP, and RS-232



Introduction

The RAID-500U3 disk array stand-alone subsystem provides a high-density, flexible, and scalable solution for centralized data storage. You can handle the RAID-500U3 as easily as handling a single SCSI HDD. The subsystem is compatible with any standard Ultra Wide/Ultra2/Ultra 160 SCSI adapter card.

Data Security

Hot-swap, Auto-rebuild, Hot-spare

The RAID-500U3 provides several configurations designed for high data availability. The failed HDD can be hot-swapped and replaced with a new HDD. The system will dynamically reconfigure the drives and auto-rebuild the lost data in the background, with no need for rebooting.

Users can specify some of the HDDs as spare in advance, thus enabling the RAID-500U3 to recover data automatically (hot-spare). Other functions include hot stand-by, auto drive failure detection, and so on.

High Manageability

Real-time, Remote Alarm Notification

The RAID-500U3 is equipped with an alarm board for automatically detecting and notifying you of a power failure, fan failure and overheating within the chassis. Audible and visual alarms enable users to locate the problems immediately.

You can also set your system to send the alarm notification to a remote host, or a pager via a modem, and to provide real-time and intelligent management of the server system.

Easy Set Up LCD Front Panel

The RAID controller provides four operation buttons and a LCD display window for users to easily configure the RAID parameters.

JAVA-Based GUI RAID Manager

A user-friendly Graphical Interface for any platform that supports Java 2.0 or higher. Communicates with controllers via LAN, Internet using hybrid TCP/IP agents; RS-232C or in-band SCSI over the host SCSI channels.

Expansion Tips

On-line Expansion for Single RAID-500U3 Unit

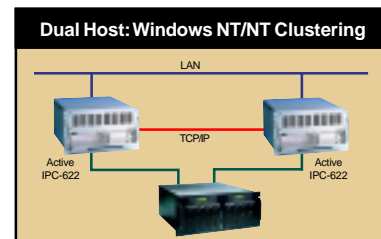
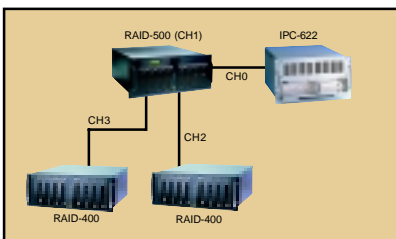
New HDDs can be added to the RAID-500U3 spare disk cartridge on-line and can be scanned and identified automatically. The system will update the configuration in the background.

Scalable, High Capacity RAID Subsystem

The RAID-500U3 can easily be scaled up to provide huge storage capacity. Each SCSI channel supports up to 8 drives, enabling you to expand your system up to hundreds of GBs.

Maximum Fault Tolerance Configuration

Connect from two server RAID controllers for maximum subsystem fault tolerance and no single point of failure.



ADVANTECH

• All brand names and registered trademarks are the property of their respective owner
• All specifications are subject to change without notice

Date of Publication: 2002-07-18

Storage Subsystems

RAID-400: Expansion Enclosure



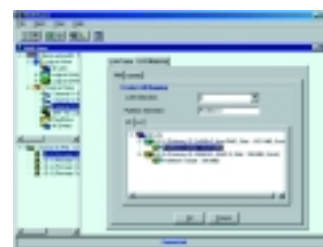
The RAID-400 is the ideal choice as your drive expansion enclosure. It offers high storage capacity and greater storage density.



Redundant power supply



Easy setup LCD front panel



Specifications

Processor System	CPU	PowerPC 64-bit RISC CPU
Cache Memory	Max. Capacity	2 GB (64 MB installed)
Channel	Number of Host or Drive Channel	4 (extendable up to 8)
	Interface	SCSI Ultra 160 LVD
	Max. Data Transfer Rate	160 MB/sec.
	All Channels Can Be Assigned as Host or Drive	Yes
	Multiple Host Support	Yes
	MSCS Clustering Support	Yes
Drive Bay	3.5" HDD	8
	Maximum of Capacity	1440 GB (180 GB x8)
	Drive Form Factor	1.6" height
	Drive Interface	Ultra 160, SCA-2 (80-pins)
	Security Lock/Door	Yes
RAID	Level	0, 1, 0+1, 3, 5, 30, 50
	Auto Rebuilding	Yes
	Hot-Spare	Yes
	On-line Expansion	Yes
Cooling	Fan	2 (49 CFM/each)
Management	Control & Monitoring	Web Based GUI management software, Text-based RAID manager software via In-band SCSI, LAN SNMP, RS-232
	Alert Notification	Fax, e-mail, pager
	S.M.A.R.T (Self-Monitoring Analysis and Reporting Technology)	Yes
	Fault Detection System	Fan, temperature, power supply
	Control	Power switch and alarm mute switch
	Indicator	LCD/LED for power, fan, temperature, and HDDs
Power Supply	Watt	300 W (1+1) Redundant
	Input	AC 115 V AC 230 V
		5 A 2.5 A
		50 Hz 60 Hz
Environment		Operating Non-Operating
	Temperature	0 ~ 50 °C (32 ~ 122 °F) -40 ~ 60 °C (-132 ~ 140 °F)
	Humidity	10 ~ 85 %, non-condensing 10 ~ 85 %, non-condensing
Physical	Dimensions (W x H x D)	482 x 222 x 482 mm (19" x 8.75" x 19")
	Weight	24 Kg (52.8 lb)

Ordering Information

Model Name	RAID Controller	Controller CPU	DRAM for RAID Controller	No. of SCSI Channels	RAID Level	SCSI Interface	SCSI Bandwidth	SCSI Cable	SCSI Disk Cartridges Installed
RAID-500U3	Yes (Single)	RISC, 64-bit	64 MB	4	0, 1, (0+1), 3 or 5	Ultra160	160 MB/sec.	LVDS	8 (SCA 80-pin type)
RAID-500M	--	--	--	--	--	Ultra160	160 MB/sec.	LVDS	8 (SCA 80-pin type)
RAID-500	--	--	--	--	--	Ultra160	160 MB/sec.	LVDS	--

Accessory Options

Model Name	Descriptions
RAID-400M	4U SCSI disk enclosure with 300 W redundant power supply and 8 SCA disk cartridges
RAID-400	4U SCSI disk enclosure with 300 W redundant power supply, without disk cartridges
RHC-U160-BLK	SCSI Ultra160 removable HDD cartridge for 80-pin SCA HDD, black